



# Komposite Fenders.

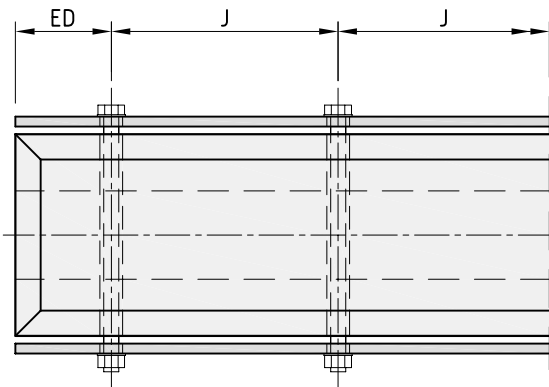
## Characteristics

- ▶ Combined energy absorption with low friction
- ▶ Supplied cut and drilled for easy and quick installation if required

## Applications

- ▶ Marinas
- ▶ Landing platforms
- ▶ Tug Boats
- ▶ Small boat berths

TYPICAL FIXING DETAILS



O shorebasis Cuxhaven LP 8 | Germany



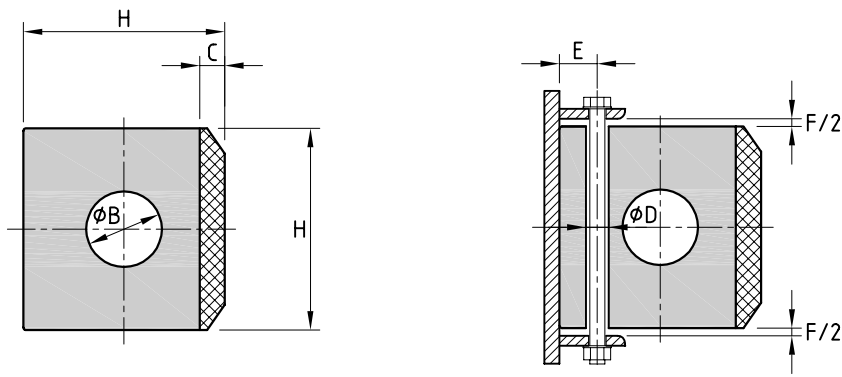
Naval Base | Doha | Qatar

KF-A FENDER DIMENSIONS

H [mm]	B [mm]	D [mm]	E [mm]	F [mm]	C [mm]	J* [mm]	ED* [mm]	Anchors	Weight [kg/m]
100 x 100	30	18	25	10	20	200 – 300	90 – 130	M12	10.3
150 x 150	65	24	30	12	20	250 – 350	110 – 150	M16	21.5
200 x 200	75	30	45	20	25	300 – 400	130 – 180	M20	40.2
250 x 250	100	36	50	25	30	350 – 450	140 – 200	M24	60.2
300 x 300	125	36	60	30	30	350 – 450	140 – 200	M24	92.1

\* For fixing details see p. 87

KF-A FENDER DRAWING

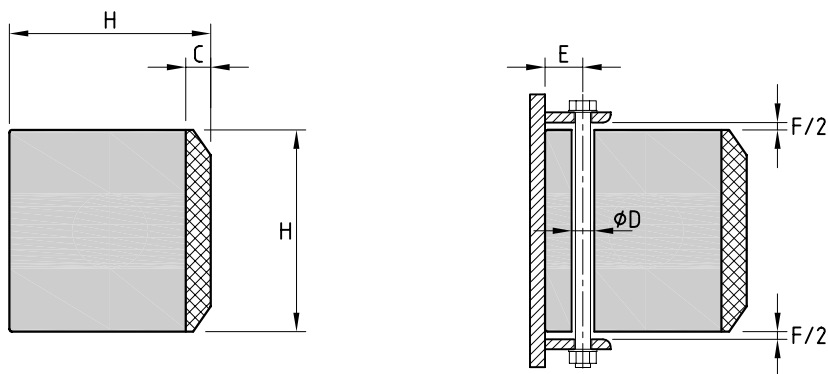


KF-B FENDER DIMENSIONS

H [mm]	D [mm]	E [mm]	F [mm]	C [mm]	J* [mm]	ED* [mm]	Anchors	Weight [kg/m]
100 x 100	18	25	10	20	200 – 300	90 – 130	M12	11.1
150 x 150	24	30	12	20	250 – 350	110 – 150	M16	27.0
200 x 200	30	45	20	25	300 – 400	130 – 180	M20	48.0
250 x 250	36	50	25	30	350 – 450	140 – 200	M24	75.0
300 x 300	36	60	30	30	350 – 450	140 – 200	M24	108.0

\* For fixing details see p. 87

KF-B FENDER DRAWING

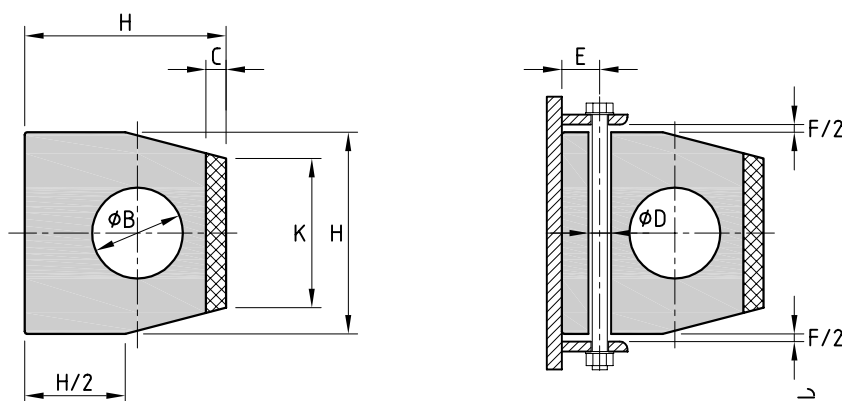


### KF-C FENDER DIMENSIONS

H [mm]	B [mm]	K [mm]	D [mm]	E [mm]	F [mm]	C [mm]	J* [mm]	ED* [mm]	Anchors	Weight [kg/m]
80 x 80	42	60	18	25	6	10	200 – 300	90 – 130	M12	5.4
100 x 100	45	74	18	25	8	10	200 – 300	90 – 130	M12	8.4
120 x 120	62	88	24	30	10	12	250 – 350	110 – 150	M16	12.2
150 x 150	73	110	24	30	12	15	250 – 350	110 – 150	M16	19.7

\* For fixing details see p. 87

### KF-C FENDER DRAWING



### KF-D FENDER DIMENSIONS

H [mm]	K [mm]	D [mm]	E [mm]	F [mm]	C [mm]	J* [mm]	ED* [mm]	Anchors	Weight [kg/m]
80 x 80	60	18	25	6	10	200 – 300	90 – 130	M12	7.0
100 x 100	74	18	25	8	10	200 – 300	90 – 130	M12	11.0
120 x 120	88	24	30	10	12	250 – 350	110 – 150	M16	15.8
150 x 150	110	24	30	12	15	250 – 350	110 – 150	M16	24.8

\* For fixing details see p. 87

### KF-D FENDER DRAWING

