



SSD Fenders.

Characteristics

- ▶ Compact size
- ▶ Light weight
- ▶ Non-marking skin
- ▶ Easy to handle

Applications

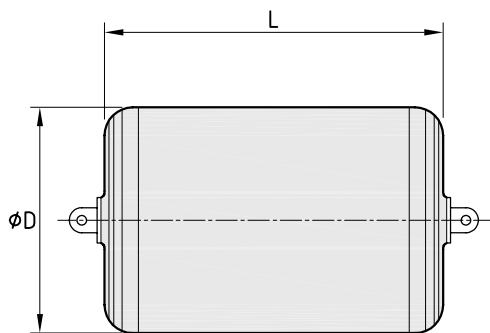
- ▶ Naval vessels
- ▶ Small tankers
- ▶ Small passenger vessels
- ▶ Supply vessels

SSD FENDER DIMENSIONS AND PERFORMANCE VALUES

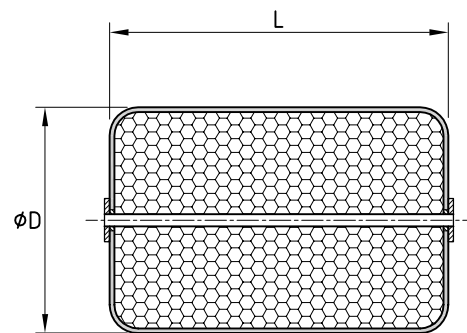
Fender Size D x L [mm]	Low Capacity			Enhanced Capacity			Standard Capacity			Hardware* [mm]
	Energy [kNm]	Reaction [kN]	Weight [kg]	Energy [kNm]	Reaction [kN]	Weight [kg]	Energy [kNm]	Reaction [kN]	Weight [kg]	
400 x 900	4.3	48.5	20.4	5.8	64.5	21.8	7.2	80.8	23.6	13
500 x 900	6.8	60.5	26.8	9.0	80.5	29.0	11.3	100.8	31.7	13
500 x 1,000	7.1	63.6	28.6	9.4	84.6	31.7	11.7	106.0	34.5	13
500 x 1,200	8.7	78.3	33.1	11.5	104.1	36.3	14.4	130.5	39.9	13
600 x 900	9.2	69.8	33.6	12.3	92.9	37.2	15.3	116.4	41.3	13
600 x 1,200	12.3	92.5	41.7	16.4	123.0	46.7	20.5	154.2	51.7	13
900 x 1,200	27.8	141.4	73.5	37.0	188.1	84.8	46.2	235.7	96.1	16
900 x 1,500	34.8	176.6	87.5	46.3	234.9	102.0	57.9	294.3	116.1	16
1,000 x 1,500	40.8	191.3	102.0	54.3	254.4	120.2	67.9	318.8	137.9	16

Above mentioned sizes are indicative and may change during final design process | Performance based on 60 % nominal rated deflection
 * For standard capacity

SSD FENDER DRAWING



WITH INTERNAL CHAIN



WITH THROUGH PIPE



Navy Base | Norfolk, VA | U SA



Navy Base | Norfolk, VA | U SA