



# Corner Fenders.

## Characteristics

- ▶ Protect exposed corners
- ▶ Simple design and easy to install
- ▶ Customized designs available
- ▶ Highly visible as colored PU option
- ▶ Available in PU and rubber

## Applications

- ▶ Berth corners
- ▶ Turning dolphins
- ▶ Locks and dry dock entrances
- ▶ Pier heads

### CORNER V FENDER DIMENSIONS

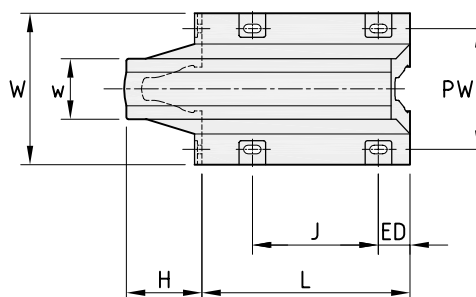
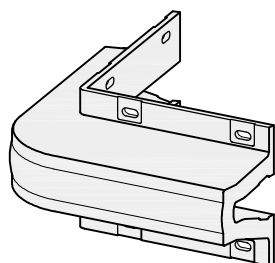
H [mm]	L* [mm]	W [mm]	PW [mm]	w [mm]	ED [mm]	J [mm]	Anchors/ Bolts	Weight [kg]
150	750 + 750	300	240	98	100	400	8	52
200	750 + 750	400	320	130	100	350	8	94
250	810 + 810	500	400	162	130	420	8	142
300	700 + 700	600	480	190	140	360	8	208
800	1,900 + 1,900	1,500	1,300	640	250	650	12	2,955

Made from rubber or PU  
 \* Other lengths available upon request



Coast Guard Terminal | Puerto Rico

### CORNER V FENDER DRAWING



### CORNER PU FENDER DIMENSIONS

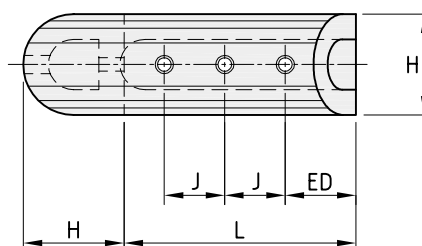
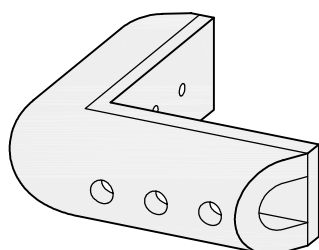
H [mm]	L [mm]	ED [mm]	J [mm]	Anchors/ Bolts	Weight [kg]
300	1,000 + 1,000	250	300	6	250
500	1,150 + 1,150	350	300	6	664

Optionally made from rubber



Kaiserschleuse | Bremerhaven | Germany

### CORNER PU FENDER DRAWING



Further possible corner protections: Wheel Fenders, Roller Fenders, Donut Fenders, Panel Systems